

PRODUCT CODE: CS24-SS
CHANNEL SPRING NUT



DESCRIPTION

M6 Short Spring Nut

FINISH

Self Colour

MATERIAL

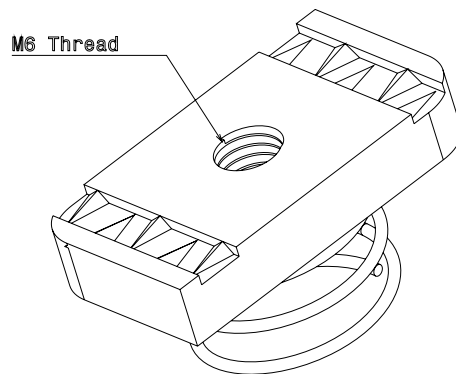
Stainless Steel Grade 316

PACKAGING

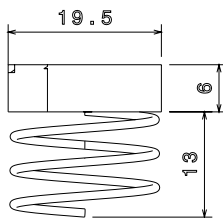
Packed in qty 100

ADDITIONAL NOTES

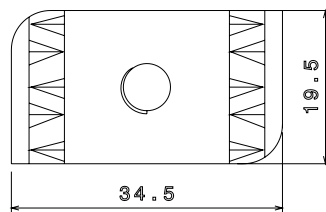
Produced to comply with the requirements of BS6946 Metal Channel Support Systems
For use with 21mm depth channel
Compliant to LU Standard 1-085 (for use on surface & sub-surface locations)



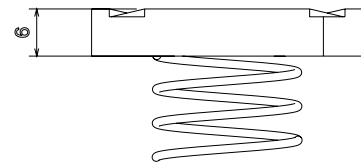
Isometric view



Front view



Top view



Side view